



# Ore to Shore: 48-Mile Hard Rock 6-Section Racecourse Map

Marquette, Michigan :: 1-866-370-RACE

www.OreToShore.com :: OreToShore@Yahoo.com



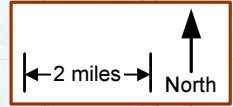
**Race Beta**  
 Distance in miles: 48.0  
 Elevation in feet:  
 Ascend: +1552  
 Descend: -2317  
 Change: -765  
 Minimum\*: 8  
 Maximum\*: 1006  
 \*Above Lake Superior

**Locator Map**

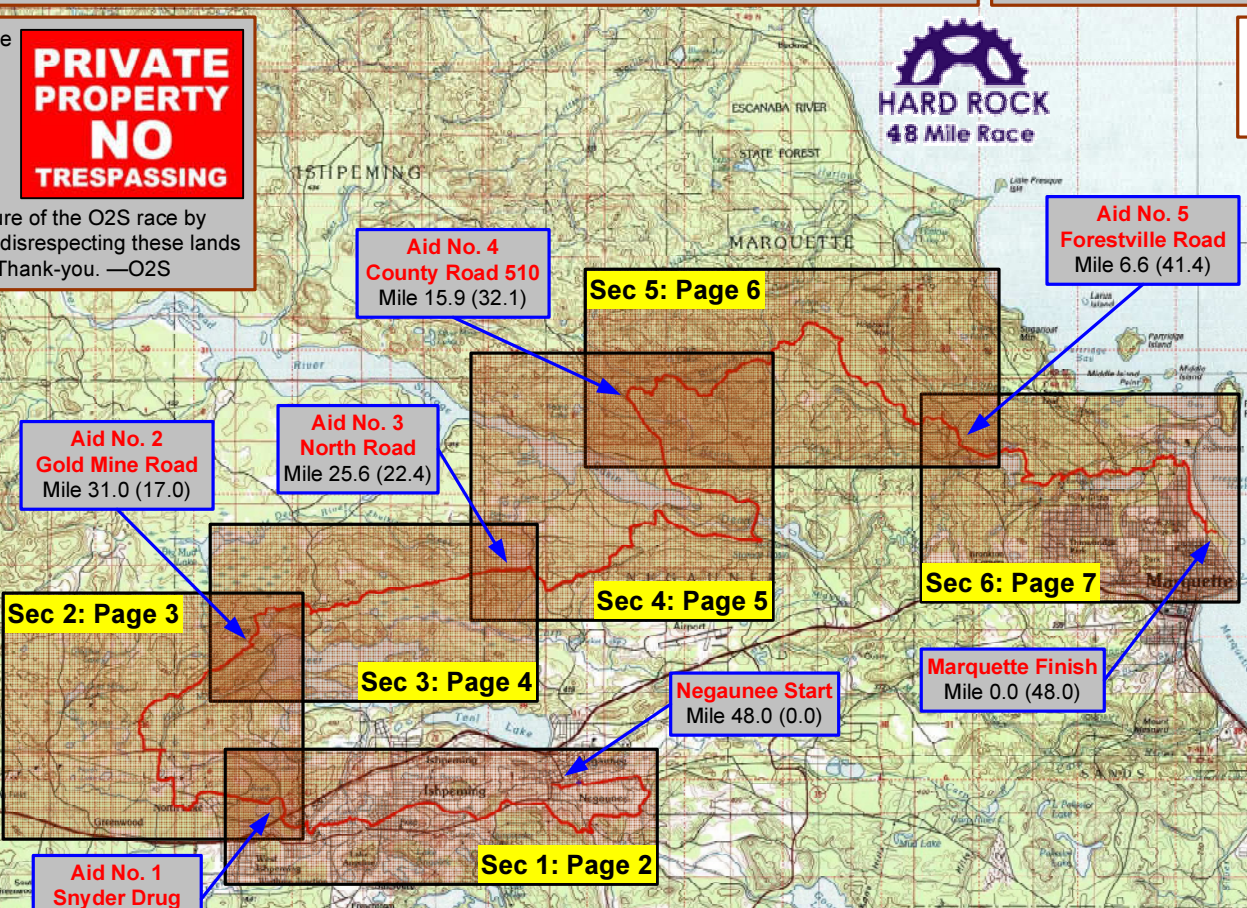


**Notice**  
 Portions of the racecourse west of CR 510 cross private lands whose owners have graciously granted O2S one-day (race-day only) use permits to cross. Please do not jeopardize the future of the O2S race by trespassing or otherwise disrespecting these lands or their owner's privacy. Thank-you. —O2S

**PRIVATE PROPERTY  
NO TRESPASSING**



August marks the annual running of the MGHS Ore to Shore (O2S) mountain bike epic. Create a unique challenge for your body and mind...take part in the race simply to enjoy the ride. —O2S



**Section Beta**

	1	2	3	4	5	6
Distance in miles:	10.1	6.9	5.4	9.7	9.3	6.6
Elevation in feet:						
Ascend:	+427	+237	+412	+383	+92	+3
Descend:	-347	-271	-352	-398	-685	-266
Change:	+80	-34	+60	-15	-593	-263
Minimum*:	685	805	725	694	270	8
Maximum*:	950	1006	941	945	872	273

\*Above surface of Lake Superior



**Caution**  
 Racecourse map not drawn to exact scale. Route locations, distances, elevations, & features are approximate & do not include latest changes. As with any human endeavor, this map is subject to omissions, inaccuracies, & errors. While efforts were made to make it reasonably correct, it must not be used for navigational purposes—and it's intended for general reference on race day only. Consult race officials for latest course changes, current conditions, hazards, advisories, etc. Cartography courtesy of Michael A. Neiger, Michigan Backcountry Search & Rescue (MiBSAR), mneiger@hotmail.com, www.MiBSAR.com, Marquette, Michigan. (rev. 07-19-11)







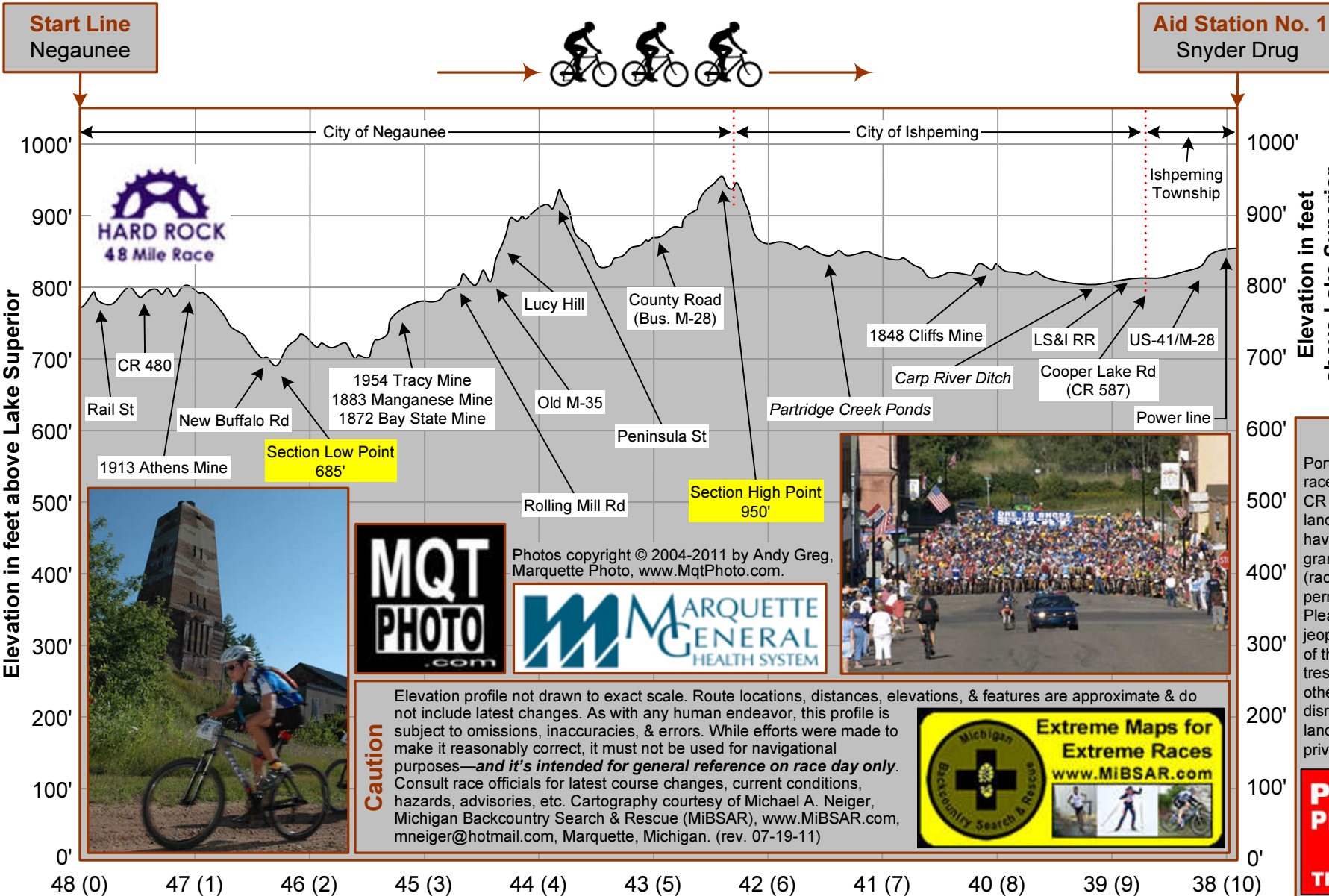
# Ore to Shore: 48-Mile Hard Rock Trail Section No. 1 Elevation Profile



Marquette, Michigan :: 1-866-370-RACE  
 www.OreToShore.com :: OreToShore@Yahoo.com

**Section Beta**  
 Distance in miles: 10.1  
 Elevation in feet:  
 Ascend: +427  
 Descend: -347  
 Change: +80  
 Minimum\*: 685  
 Maximum\*: 950  
 \*Above Lake Superior

**Locator Map**



*Designed so parents can race in the morning, then watch their kids in the afternoon, the O2S is sure to be fun for the entire family. —O2S*



Photos copyright © 2004-2011 by Andy Greg, Marquette Photo, www.MqtPhoto.com.



**Caution**  
 Elevation profile not drawn to exact scale. Route locations, distances, elevations, & features are approximate & do not include latest changes. As with any human endeavor, this profile is subject to omissions, inaccuracies, & errors. While efforts were made to make it reasonably correct, it must not be used for navigational purposes—and it's intended for general reference on race day only. Consult race officials for latest course changes, current conditions, hazards, advisories, etc. Cartography courtesy of Michael A. Neiger, Michigan Backcountry Search & Rescue (MiBSAR), www.MiBSAR.com, mneiger@hotmail.com, Marquette, Michigan. (rev. 07-19-11)



**Notice**  
 Portions of the racecourse west of CR 510 cross private lands whose owners have graciously granted O2S one-day (race-day only) use permits to cross. Please do not jeopardize the future of the O2S race by trespassing or otherwise disrespecting these lands or their owner's privacy. Thank-you.

**PRIVATE PROPERTY NO TRESPASSING**



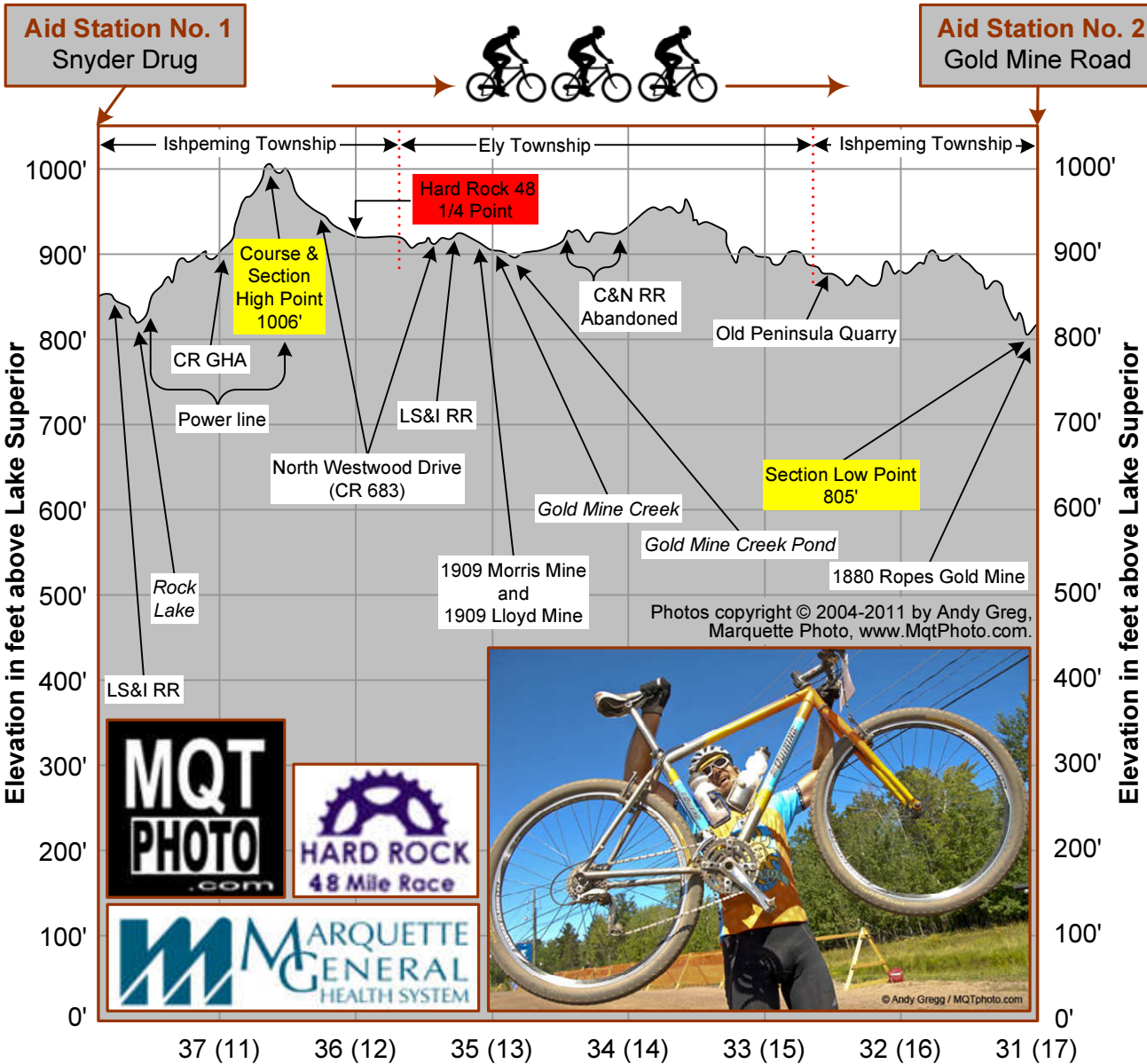
# Ore to Shore: 48-Mile Hard Rock Trail Section No. 2 Elevation Profile



Marquette, Michigan :: 1-866-370-RACE  
 www.OreToShore.com :: OreToShore@Yahoo.com

**Section Beta**  
 Distance in miles: 6.9  
 Elevation in feet:  
 Ascend: +237  
 Descend: -271  
 Change: -34  
 Minimum\*: 805  
 Maximum\*: 1006  
 \*Above Lake Superior

**Locator Map**



The O2S started off as an idea between two riding buddies. "Jeff Juntti and I wanted to create a point-to-point race that offered accessible terrain to every skill level," explained race director Scott Tuma. Putting together the O2S was no easy task... But the effort proved worthy as the O2S now attracts top Midwest riders and thousands of others. —O2S



**Caution**  
 Elevation profile not drawn to exact scale. Route locations, distances, elevations, & features are approximate & do not include latest changes. As with any human endeavor, this profile is subject to omissions, inaccuracies, & errors. While efforts were made to make it reasonably correct, it must not be used for navigational purposes—and it's intended for general reference on race day only. Consult race officials for latest course changes, current conditions, hazards, advisories, etc. Cartography courtesy of Michael A. Neiger, Michigan Backcountry Search & Rescue (MiBSAR), www.MiBSAR.com, mneiger@hotmail.com, Marquette, Michigan. (rev. 07-03-11)





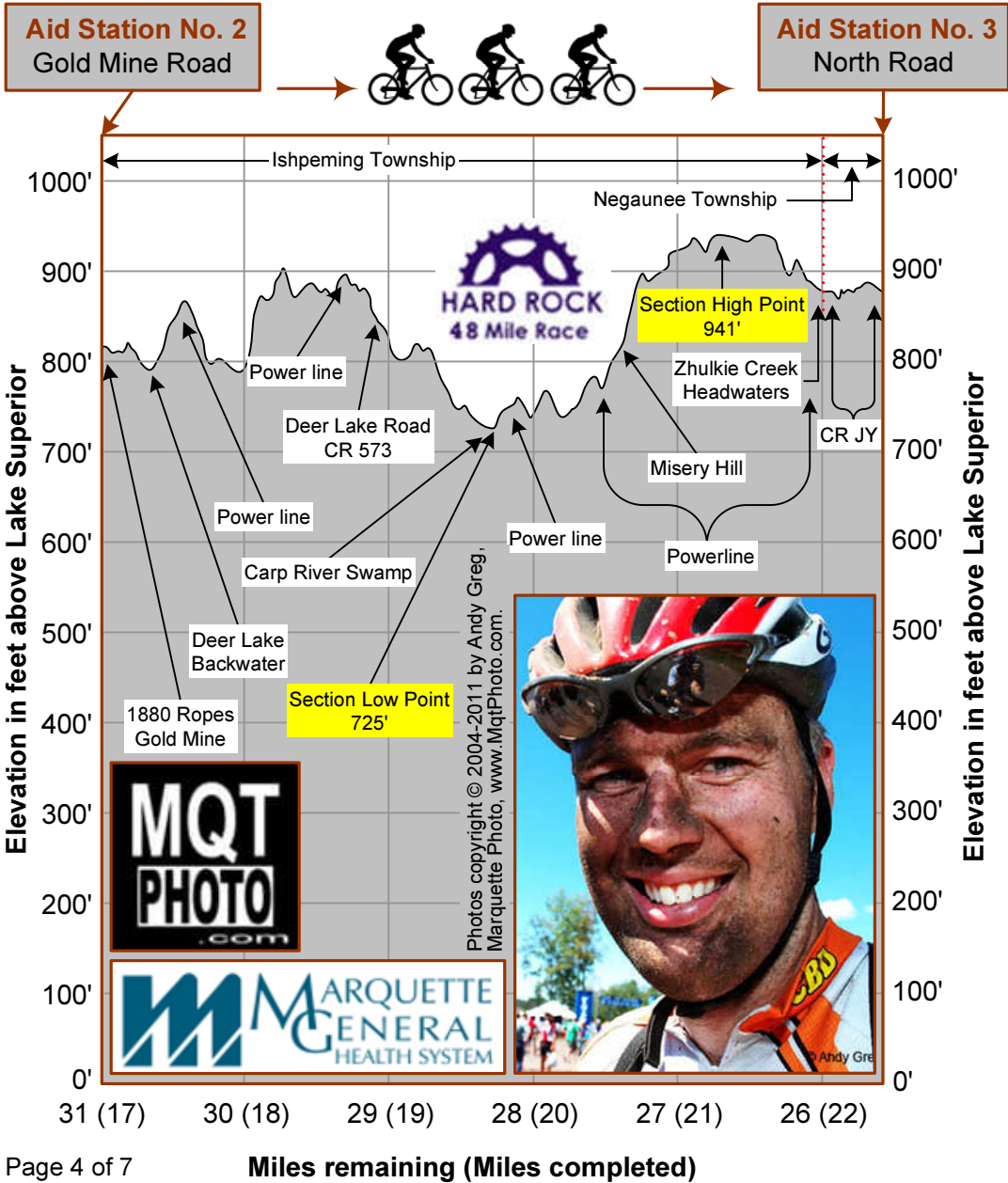
# Ore to Shore: 48-Mile Hard Rock Trail Section No. 3 Elevation Profile

Marquette, Michigan :: 1-866-370-RACE  
 www.OreToShore.com :: OreToShore@Yahoo.com



<b>Section Beta</b>	Distance in miles:	5.4
	Elevation in feet:	
	Ascend:	+412
	Descend:	-352
	Change:	+60
	Minimum*:	725
Maximum*:	941	
*Above Lake Superior		

**Locator Map**



Scott Tuma, 2011 O2S Race Director, on the growing popularity of the O2S...

*First, I think it's our geography. We have great terrain here in Marquette County. It's not flat by any means, but it's not as undoable as the Colorado Mountains either.*

*With Lake Superior as a backdrop, magnificent views are provided as some racers descend practically 1,000 feet. Sometimes I know it doesn't seem like it, especially at Kirby's Hill, but from 20 or so miles out, you're on a gradual decline towards the lake for the duration.*

*Secondly, we've designed a course that's interesting to all levels of riders. We're attracting some of the Mid-West's top riders who enjoy the challenge of the 48-mile course, but we are also attracting riders for the 28-mile race who have never before entered any race.*

*They feel comfortable enough knowing that there is support on the trail, that the trail isn't too technical and that they can ride for their own personal enjoyment.*



### Caution

Elevation profile not drawn to exact scale. Route locations, distances, elevations, & features are approximate & do not include latest changes. As with any human endeavor, this profile is subject to omissions, inaccuracies, & errors. While efforts were made to make it reasonably correct, it must not be used for navigational purposes—and it's intended for general reference on race day only. Consult race officials for latest course changes, current conditions, hazards, advisories, etc. Cartography courtesy of Michael A. Neiger, Michigan Backcountry Search & Rescue (MiBSAR), www.MiBSAR.com, mneiger@hotmail.com, Marquette, Michigan. (rev. 07-19-11)

### Notice

Portions of the racecourse west of CR 510 cross private lands whose owners have graciously granted O2S one-day (race-day only) use permits to cross. Please do not jeopardize the future of the O2S race by trespassing or otherwise disrespecting these lands or their owner's privacy. Thank-you.





# Ore to Shore: 48-Mile Hard Rock Trail Section No. 4 Elevation Profile

Marquette, Michigan :: 1-866-370-RACE  
 www.OreToShore.com :: OreToShore@Yahoo.com



**Section Beta**

Distance in miles:	9.7
Elevation in feet:	
Ascend:	+383
Descend:	-398
Change:	-15
Minimum*:	694
Maximum*:	945

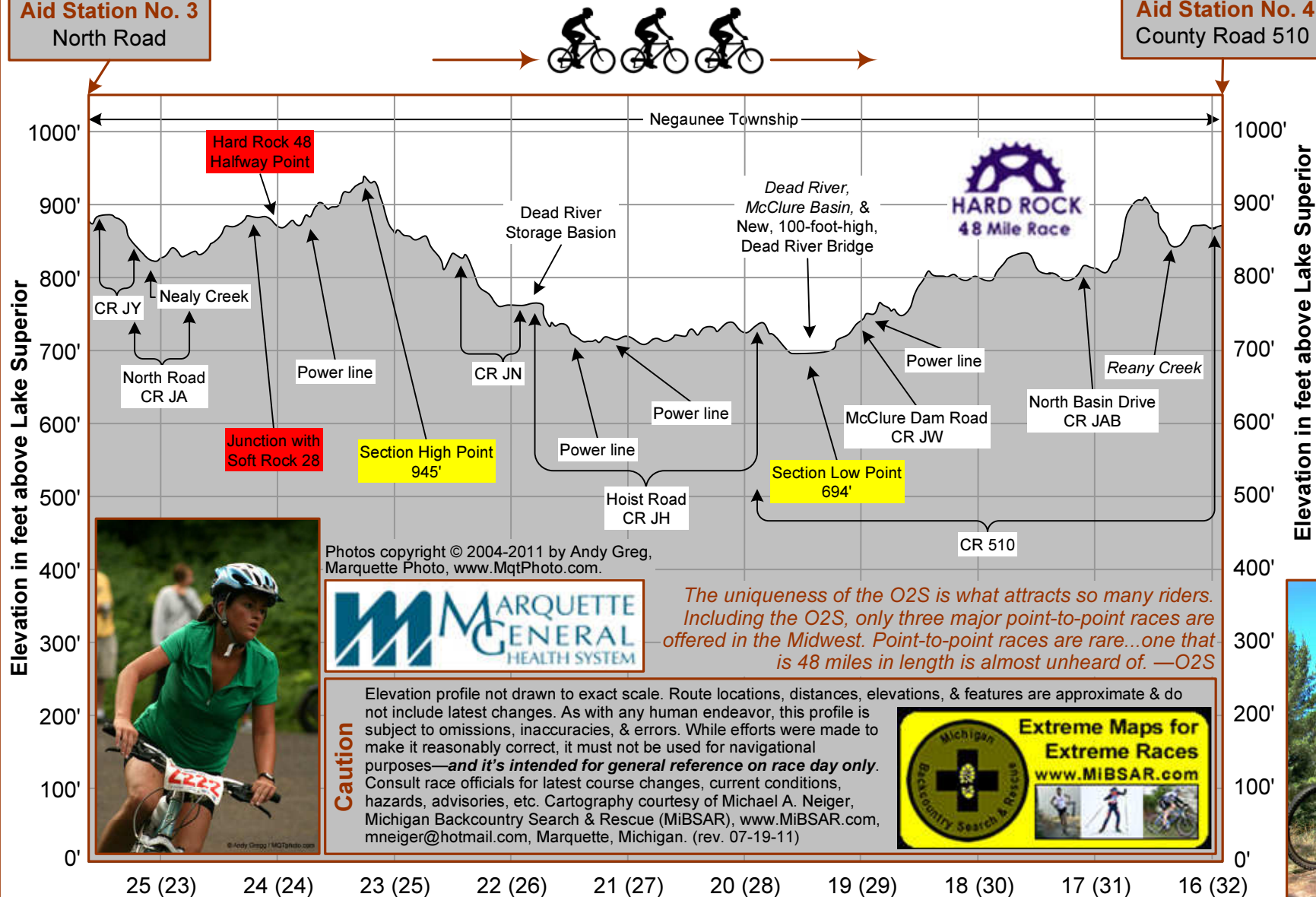
\*Above Lake Superior

**Locator Map**



**Aid Station No. 3**  
North Road

**Aid Station No. 4**  
County Road 510



**Notice**  
 Portions of the racecourse west of CR 510 cross private lands whose owners have graciously granted O2S one-day (race-day only) use permits to cross. Please do not jeopardize the future of the O2S race by trespassing or otherwise disrespecting these lands or their owner's privacy. Thank-you.

**PRIVATE PROPERTY**  
**NO TRESPASSING**



Photos copyright © 2004-2011 by Andy Greg, Marquette Photo, www.MqtPhoto.com.



*The uniqueness of the O2S is what attracts so many riders. Including the O2S, only three major point-to-point races are offered in the Midwest. Point-to-point races are rare...one that is 48 miles in length is almost unheard of. —O2S*

**Caution**  
 Elevation profile not drawn to exact scale. Route locations, distances, elevations, & features are approximate & do not include latest changes. As with any human endeavor, this profile is subject to omissions, inaccuracies, & errors. While efforts were made to make it reasonably correct, it must not be used for navigational purposes—and it's intended for general reference on race day only. Consult race officials for latest course changes, current conditions, hazards, advisories, etc. Cartography courtesy of Michael A. Neiger, Michigan Backcountry Search & Rescue (MiBSAR), www.MiBSAR.com, mneiger@hotmail.com, Marquette, Michigan. (rev. 07-19-11)







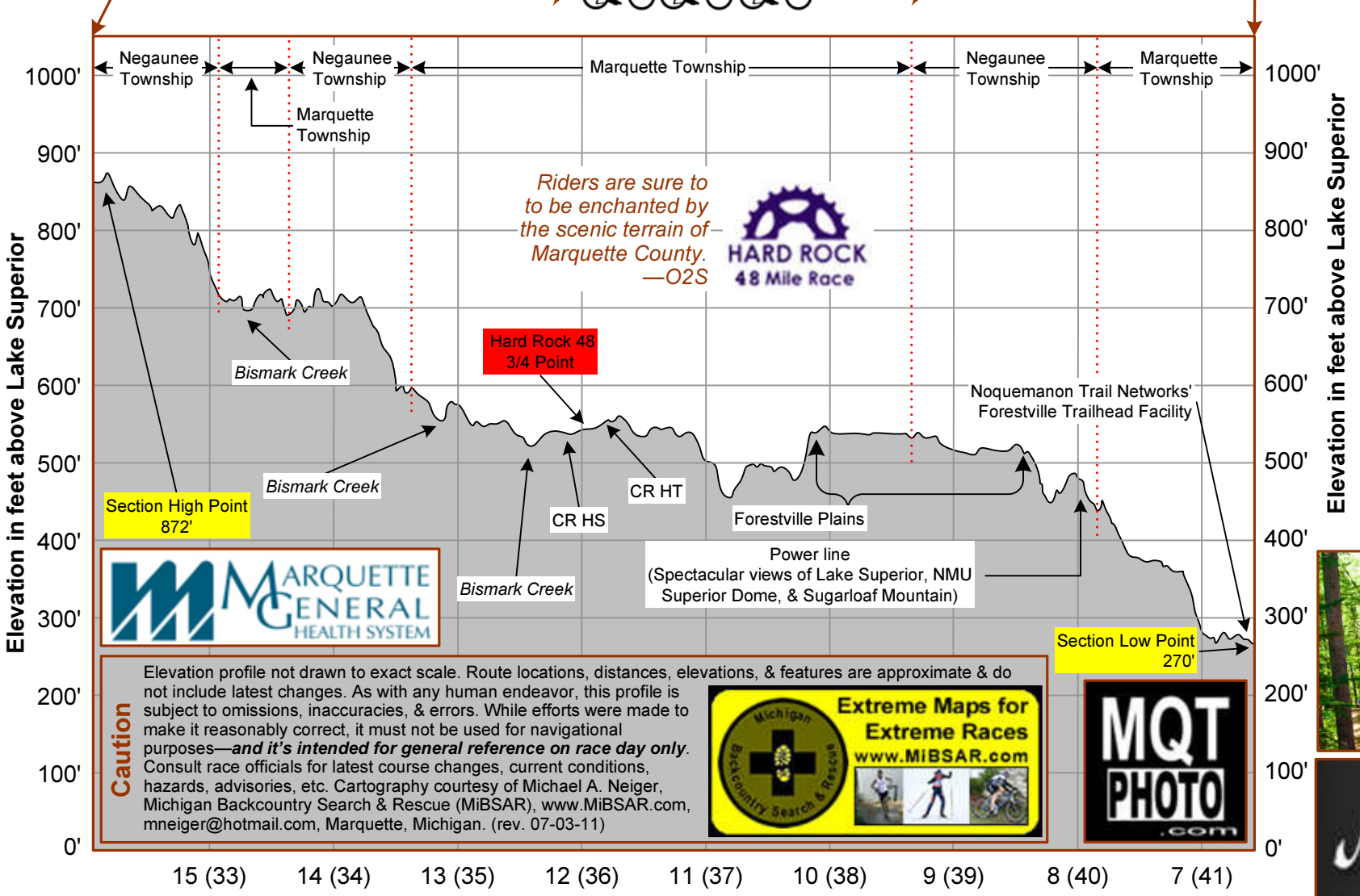
# Ore to Shore: 48-Mile Hard Rock Trail Section No. 5 Elevation Profile

Marquette, Michigan :: 1-866-370-RACE  
 www.OreToShore.com :: OreToShore@Yahoo.com



<b>Section Beta</b>	Distance in miles:	9.3
	Elevation in feet:	
	Ascend:	+92
	Descend:	-685
	Change:	-593
	Minimum*:	270
Maximum*:	872	
*Above Lake Superior		

**Locator Map**



*Riders are sure to be enchanted by the scenic terrain of Marquette County.*  
 —O2S



**Caution** Elevation profile not drawn to exact scale. Route locations, distances, elevations, & features are approximate & do not include latest changes. As with any human endeavor, this profile is subject to omissions, inaccuracies, & errors. While efforts were made to make it reasonably correct, it must not be used for navigational purposes—and it's intended for general reference on race day only. Consult race officials for latest course changes, current conditions, hazards, advisories, etc. Cartography courtesy of Michael A. Neiger, Michigan Backcountry Search & Rescue (MiBSAR), www.MiBSAR.com, mneiger@hotmail.com, Marquette, Michigan. (rev. 07-03-11)



**Notice**  
 Portions of the racecourse west of CR 510 cross private lands whose owners have graciously granted O2S one-day (race-day only) use permits to cross. Please do not jeopardize the future of the O2S race by trespassing or otherwise disrespecting these lands or their owner's privacy. Thank-you.

Photos copyright © 2004-2011 by Andy Greg.  
 Marquette Photo, www.MqtPhoto.com.

**PRIVATE PROPERTY NO TRESPASSING**





# Ore to Shore: 48-Mile Hard Rock Trail Section No. 6 Elevation Profile



Marquette, Michigan :: 1-866-370-RACE  
 www.OreToShore.com :: OreToShore@Yahoo.com

<b>Section Beta</b>	Distance in miles:	6.6
	Elevation in feet:	
	Ascend:	+3
	Descend:	-266
	Change:	-263
	Minimum*:	8
	Maximum*:	273

\*Above Lake Superior

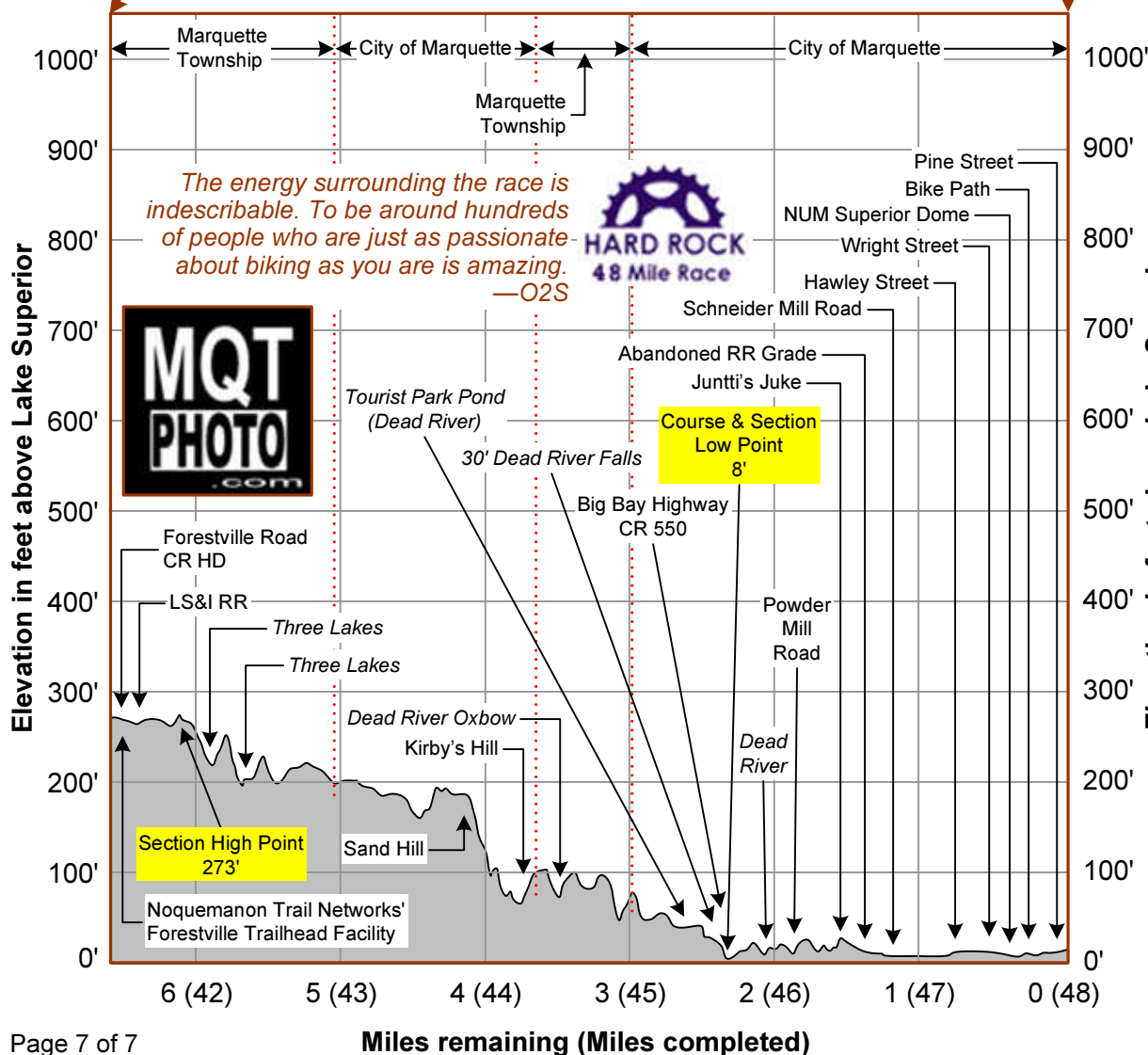
**Locator Map**



**Aid Station No. 5**  
Forestville Road



**Finish Line**  
Marquette



Photos copyright © 2004-2011 by Andy Greg, Marquette Photo, www.MqtPhoto.com.



**Caution**

Elevation profile not drawn to exact scale. Route locations, distances, elevations, & features are approximate & do not include latest changes. As with any human endeavor, this profile is subject to omissions, inaccuracies, & errors. While efforts were made to make it reasonably correct, it must not be used for navigational purposes—and it's intended for general reference on race day only. Consult race officials for latest course changes, current conditions, hazards, advisories, etc. Cartography courtesy of Michael A. Neiger, Michigan Backcountry Search & Rescue (MiBSAR), www.MiBSAR.com, mneiger@hotmail.com, Marquette, Michigan. (rev. 07-19-11)